

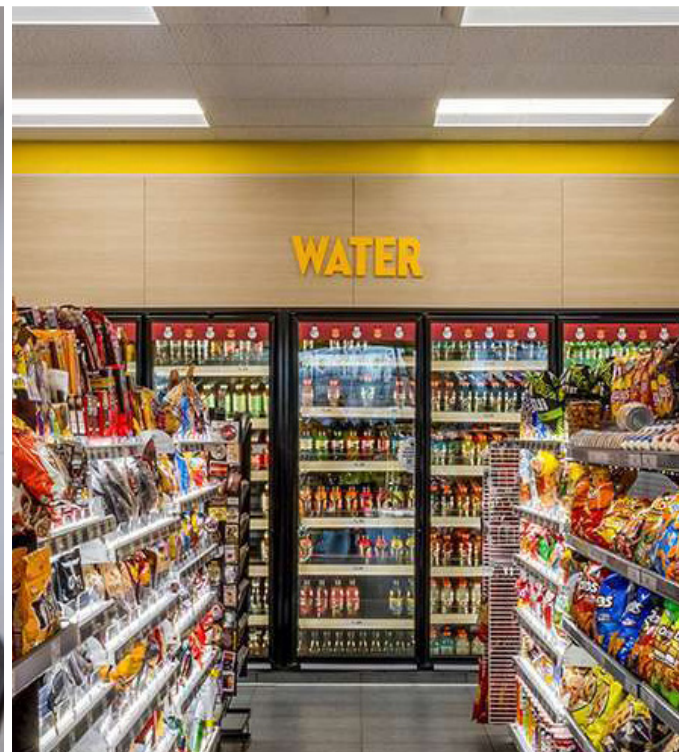
# Integrated Wall Surfacing Systems



HEALTHCARE



COMMERCIAL



RETAIL



EDUCATION

# Wall panels simplified. Single source solution.

PSI Wall Systems allow you to choose from a variety of materials to apply to panels and achieve a seamless design under one single specification.

The sky’s the limit.

Whether you’re looking to make your walls a visual focal point of your space, creating murals with custom high-pressure laminate or seeking functionality and durability with our phenolic wall panels, our interior wall paneling systems will transform your space.

*Front Cover:*  
System 412 paired with wood veneer panels

*Back Cover:*  
Top Left: System 310 paired with a custom graphic panel system | Top Right: System 510EB paired with HPL panels  
Bottom Left: System 410 paired with HPL wood veneer panels | Bottom Right: System 632 paired with decorative glass and wood veneer panels

## CONTENTS

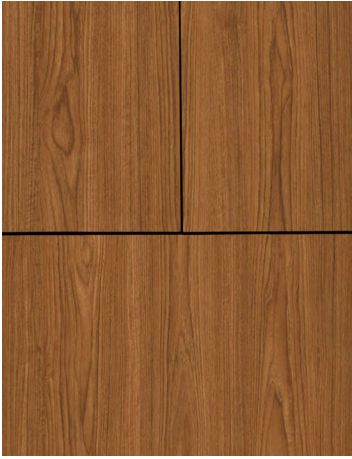
- System 310: 1/16” wide reveal .....9
- System 310EB: 1/4” wide reveal with rounded edge banding ..... 15
- System 310EB | 310: 1/4” wide horizontal reveal, 1/16” wide vertical reveal ..... 19
- System 312: 1/2” wide recessed reveal.....23
- System 312 | 310: 1/2” wide horizontal recessed reveal, 1/16” wide vertical reveal .....27
- System 314: 1/4” wide concave radius reveal .....31
- System 410: 1/2” wide divider molding covers panel edges.....35
- System 412: 1” wide divider molding .....39
- System 510EB: 1/4” wide reveal with rabbeted banding .....43
- System 631: 1/4” reveal with narrow single rib .....47
- System 632: 1/2” wide reveal with double ribbed fin design.....51
- 103L Corner: 90 or 135 degree outside corner with 1”x1” rounded flanges .....55
- 603L Corner: 90 or 135 degree outside corner, stepped appearance with 3/8” wide face .....59
- Wall Panel Surface Gallery .....63
- Customization .....81
- Technical Insights .....89
- Index .....93



PSI systems are a streamlined, integrated system that do not require coordinating with numerous suppliers for various materials and design elements. Instead, you'll collaborate with Surface Materials that specializes in developing a cohesive system.

This system accommodates a diverse range of materials, including real wood veneers, writable surfaces, high pressure laminate, compact laminate, tack boards, glass, and acoustic materials, all seamlessly integrated under a unified installation framework.

**SYSTEM 310**



Minimal 1/16" wide reveal. Black or clear anodized color standard.

*Available in:* High Pressure or Compact Laminate, Metal Laminate, Custom Graphic Laminate, Wood Veneer, Decorative Glass, Acoustical

**SYSTEM 310EB**



1/4" wide reveal created with rounded 3mm edge banding.

*Available in:* High Pressure Laminate, Metal Laminate


**SYSTEM 310EB/310**



1/4" wide horizontal reveal with 3mm thick edge banding on the horizontal panel edges. Vertical joint is a minimal 1/16" wide reveal.

*Available in:* High Pressure Laminate, Metal Laminate

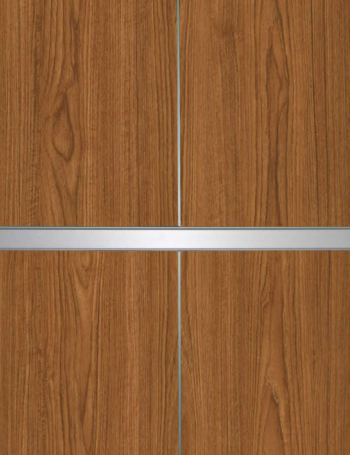
**SYSTEM 312**



Bold 1/2" wide recessed reveal. Black or clear anodized color standard. Custom colors available.

*Available in:* High Pressure or Compact Laminate, Metal Laminate, Custom Graphic Laminate, Wood Veneer, Decorative Glass, Acoustical


**SYSTEM 312/310**



Strong horizontal visual with a 1/2" wide recessed reveal running horizontally and a minimal 1/16" reveal running vertically.

*Available in:* High Pressure or Compact Laminate, Metal Laminate, Wood Veneer, Decorative Glass, Acoustical


**SYSTEM 314**



1/4" wide concave radius reveal at horizontal and vertical panel joints. Black or clear anodized color standard.

*Available in:* High Pressure or Compact Laminate, Metal Laminate, Custom Graphic Laminate, Wood Veneer, Decorative Glass, Acoustical

**103L CORNER**




The 103L-90 and 103L-135 are 90 and 135-degree outside corners with 1" x 1" rounded flanges that overlap the panel edges. Black and clear anodized are the standard colors.

**603L CORNER**



The 603-90 and 603-135 are 90 and 135-degree outside corners present a stepped appearance with a 3/8" wide face. Black and clear anodized are the standard colors.


**SYSTEM 410**



1/2" wide divider molding covers edges. Black or clear anodized color standard.

*Available in:* High Pressure or Compact Laminate, Metal Laminate, Custom Graphic Laminate, Wood Veneer, Tack Board, Magnetic Marker Board, Decorative Glass, Acoustical

**SYSTEM 412**



1" wide bold divider molding. Two 1/4" wide flanges cover the panel edges with a 1/2" recessed reveal between.

*Available in:* High Pressure or Compact Laminate, Metal Laminate, Tack Board, Wood Veneer, Magnetic Marker Board, Decorative Glass, Acoustical

**SYSTEM 510EB**



1/4" wide reveal created with rabbeted 3mm edge banding.

*Available in:* High Pressure Laminate, Metal Laminate


**SYSTEM 631**



Tailored 1/4" reveal with a sleek narrow single rib. Black or clear anodized color is standard.

*Available in:* High Pressure or Compact Laminate, Metal Laminate, Custom Graphic Laminate, Wood Veneer, Decorative Glass, Acoustical


**SYSTEM 631/632**



Narrow 1/4" wide horizontal reveal with sleek single rib and strong vertical 1/2" reveal defined by its double ribbed design.

*Available in:* High Pressure or Compact Laminate, Metal Laminate, Custom Graphic Laminate, Wood Veneer, Decorative Glass, Acoustical

**SYSTEM 632**

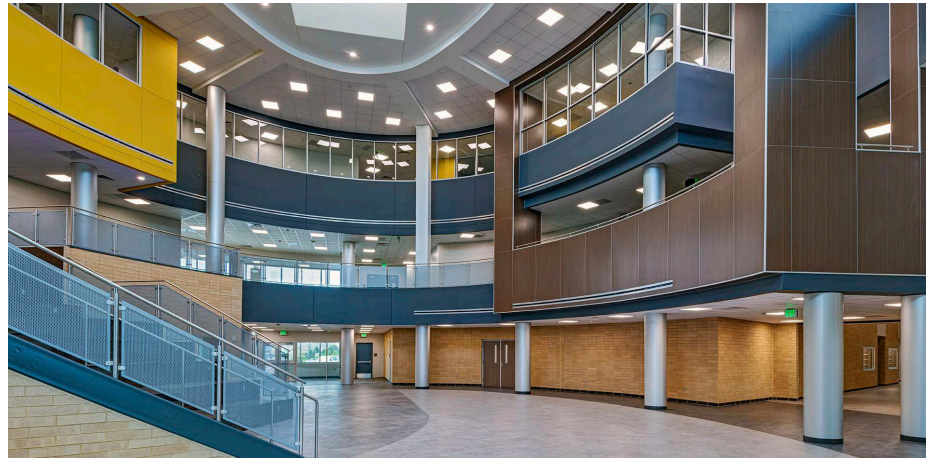


Bold 1/2" wide reveal containing a double ribbed fin design. Black or clear anodized color is standard.

*Available in:* High Pressure or Compact Laminate, Metal Laminate, Custom Graphic Laminate, Wood Veneer, Decorative Glass, Acoustical

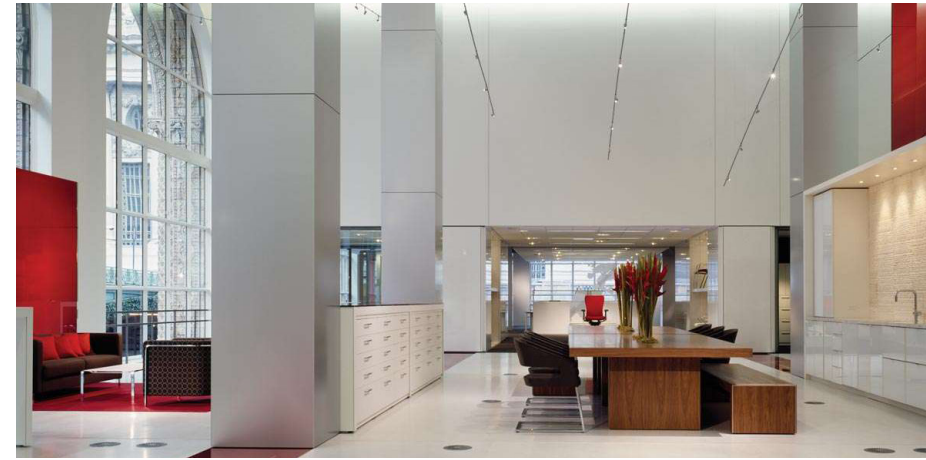
# WALL PANEL SURFACES

## MIX & MATCH TO ACHIEVE YOUR PROJECT'S NEEDS



### HIGH PRESSURE (HPL) & COMPACT (PHENOLIC) LAMINATE

As the ultimate workhorse of the wall panel system family, high-pressure laminate panels provide durability without sacrificing aesthetic integrity.



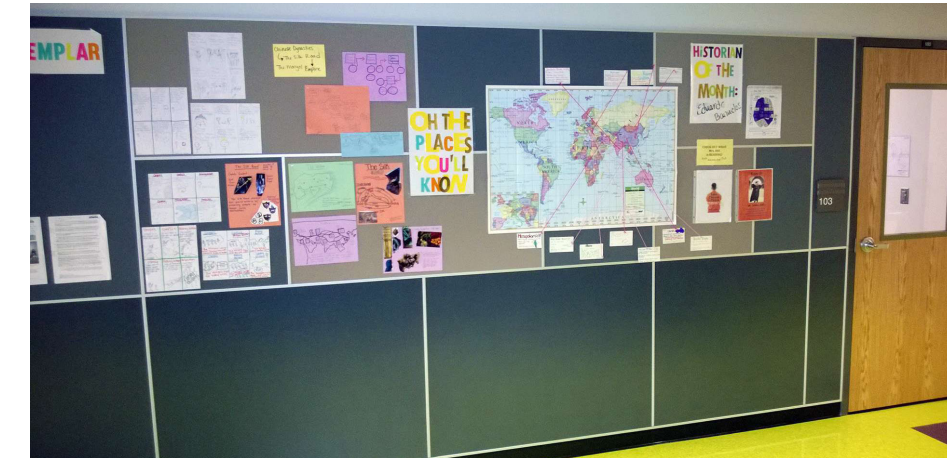
### METAL LAMINATE

Metal laminate panels fuse industrialism with sophistication to add a high-tech flair to any space.



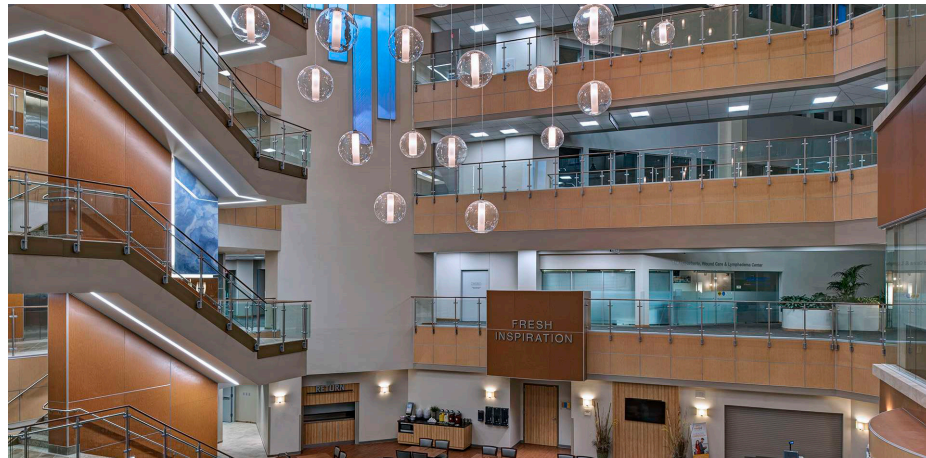
### MAGNETIC DRY-ERASE BOARD

With a magnetic porcelain enameled steel face, wall panels with dry-erase surfaces are high-performing and resistant to scratches, stains and fading.



### TACK BOARD

Our tack boards are durable and long-lasting in high-usage situations.



### WOOD VENEER

The natural beauty of wood veneer wall panels makes them a timeless addition to any space.



### CUSTOM GRAPHIC LAMINATE

Showcase your brand in the most impactful way with custom high-pressure laminate panels.



### DECORATIVE GLASS

Back painted glass is the perfect material for introducing color into a space, in a sleek and modern fashion.



### ACOUSTICAL PANELS

Reduce unwanted noise in interior environments.



**SYSTEM 310**

1/16" wide reveal

Perfect for custom graphics and minimizing panel joints

# SYSTEM 310

- Minimal 1/16" wide reveal. Black or clear anodized colors are standard.
- Use vertically or horizontally
- Progressively installed system
- Panels have .5mm thick edge banding, black or platinum standard color

**Available in:** High Pressure or Compact Laminate, Metal Laminate, Custom Graphic Laminate, Wood Veneer, Decorative Glass, Acoustical

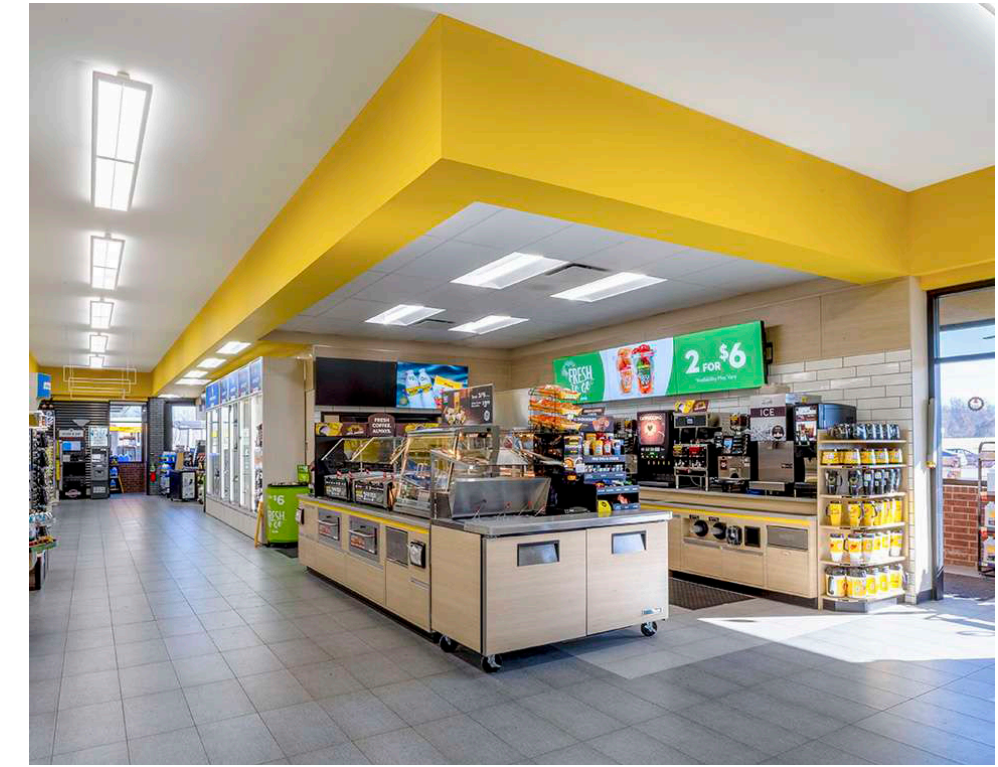
PSI SYSTEMS



20' x 40' mural created with high resolution photos using 4' x 10' panels with a 1/16" wide black reveal moldings.



Horizontally oriented 4'x10' custom laminate panels with a 1/16" wide clear anodized reveal moldings.



HPL faced panels and a 1/16" wide divider molding used on walls and surrounds around display cases. The same HPL is used on matching store fixtures.

# SYSTEM 310

PSI SYSTEMS



Custom graphic laminate surface with a 1/16" wide black divider molding reveal.



A 1/16" wide molding reveal minimizes the joints between the different color panels.



Banquet seating features woodgrain HPL surface with a 1/16" black divider molding reveal.



### SYSTEM 310EB

1/4" wide reveal with rounded 3mm panel edge banding

Perfect for a subtle, consistent look

# SYSTEM 310EB

- ¼" wide reveal created with rounded 3mm panel edge banding.
- Use vertically or horizontally
- Progressively installed system
- Edge banding color matched to panels minimizes the visible joint line, or the use of contrasting colored edge banding emphasizes the panel joints.

**Available in:** High Pressure Laminate, Metal Laminate



Renovated school hallway shows a 3mm platinum color panel edge banding and a hidden divider molding (302) to create a strong modular appearance on HPL surfaced walls.  
(Before shown below.)



Horizontal panel orientation with a woodgrain pattern HPL panel surface and a 3mm platinum color edge banding featuring a hidden divider molding (302) to create a framed modular look.

PSI SYSTEMS





**SYSTEM 310EB/310**

1/4" wide horizontal reveal with 3mm thick edge banding, and a minimal 1/16" wide vertical reveal

Perfect for creating a subtle vertical reveal with a strong horizontal banding effect

# SYSTEM 310EB/310

- A dominate horizontal visual with a ¼” wide horizontal reveal created with 3mm thick edge banding on the horizontal panel edges.
- The vertical joint is a minimal 1/16” wide reveal.
- A strong horizontal line can be created with a color edge banding contrasting with the panel surface.
- Panel reveals can be minimized using matching color edge banding.
- Progressively installed system.

**Available in:** High Pressure Laminate, Metal Laminate

PSI SYSTEMS



Bonham Elementary School hallway with HPL for high durability.



**SYSTEM 312**

1/2" wide recessed reveal

Perfect for a bold, consistent look

# SYSTEM 312

- Bold 1/2" wide recessed reveal. Black or clear anodized colors are standard. Custom Colors are available.
- Available with a snap-in aluminum concave or flat insert. HPL strips can also be inserted into the recess reveal.
- Progressively installed system.
- Panels have .5mm thick edge banding (black or platinum color are standard)

**Available in:** High Pressure or Compact Laminate, Metal Laminate, Custom Graphic Laminate, Wood Veneer, Decorative Glass, Acoustical



Orange custom laminate was used to identify the 4th grade corridor. Panels are in a vertical orientation with a 1/2" wide divider molding. Elementary schools often only use 4' high wainscots since that is where the wear and damage is most likely to occur.

To the right, the corridors have matching color portals at their entrances as a wayfinding technique. Both corridors have tack boards above the lower HPL faced panels.



Walls feature a 1/2" wide black divider molding option.



Compact laminate panels with a 1/2" wide channel molding in a transportation terminal.



High abuse-resistant compact laminate panels with a 1/2" wide channel divider molding.



**SYSTEM 312/310**

1/2" wide horizontal recessed reveal and a minimal 1/16" vertical reveal

Perfect for creating a strong horizontal banding look

# SYSTEM 312/310

- A strong horizontal visual with a 1/2" wide recessed reveal running horizontally and a minimal 1/16" reveal running vertically.
- Progressively installed system.
- Panels have .5mm thick edge banding (black or platinum color are standard)
- Black or clear anodized colors are standard.

**Available in:** High Pressure or Compact Laminate, Metal Laminate, Wood Veneer, Decorative Glass, Acoustical



Horizontal 312 with a 1/2" wide molding, paired with 310 and a 1/16" wide divider molding reveal used vertically to create a horizontal banding image.



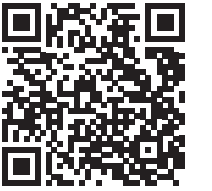
Vertical molding with a 1/16" wide reveal divider molding. Horizontal panel divider molding is 312 channel molding. This creates a strong horizontal banding appearance and minimalistic vertical seams.

Durable HPL faced panels, mixed with the use of custom graphic laminate to display inspirational messages on the walls.



Horizontal 312 with a 1/2" wide clear anodized molding, paired with 310 and a 1/16" wide black divider molding reveal used vertically to create a horizontal banding image.

PSI SYSTEMS





#### SYSTEM 314

1/4" wide concave radius reveal

Perfect for a subtle look resembling grout lines

# SYSTEM 314

- ¼" wide concave radius reveal at horizontal and vertical panel joints. Black or clear anodized colors are standard.
- Progressively installed system.
- Panels have .5mm edge banding (black or platinum color are standard)

**Available in:** High Pressure or Compact Laminate, Metal Laminate, Custom Graphic Laminate, Wood Veneer, Decorative Glass, Acoustical



Resembling a tile grout line, the ¼" wide concave profile divider molding is easy to clean. Paired with HPL panels for durability and ease of maintenance.



Wood veneer panels with a ¼" wide black divider molding.



Multi-colored HPL faced panels with a ¼" clear anodized divider molding.



Multi-colored HPL faced panels with a ¼" clear anodized divider molding.



WILDCAT  
WORKFORCE

LEVEL 1

LEVEL 2

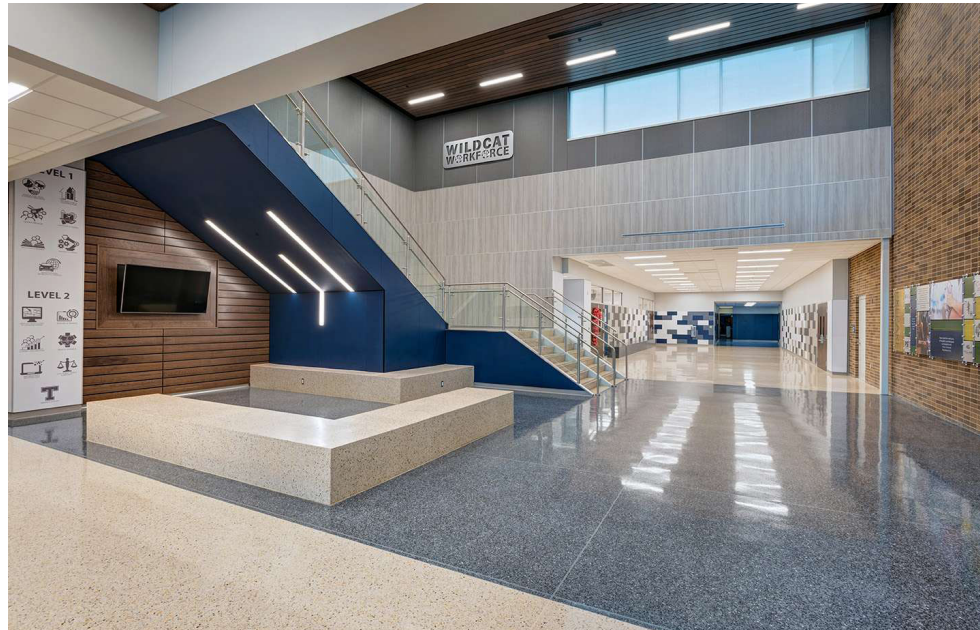
**SYSTEM 410**

1/2" wide divider molding covers panel edges  
Perfect for a bold look that is easy on maintenance and cleanup

# SYSTEM 410

- ½" wide divider molding that covers panel edges. Black or clear anodized colors are standard.
- Available as a 1 piece "H" shaped molding or a 2 piece snap-on face batten with base.
- Use vertically or horizontally.
- A non-progressively installed system (2 piece only)

**Available in:** High Pressure or Compact Laminate, Metal Laminate, Custom Graphic Laminate, Wood Veneer, Tack Board, Magnetic Marker Board, Decorative Glass, Acoustical



Modular appearance created with a ½" wide snap-on divider moldings. Overlapping face trims do not allow substances, such as chewing gum, to be placed in a reveal between the panels.



Tack board panels framed with a ½" wide divider molding. The multi-color HPL faced panels with a .5mm black edge banding have divider moldings between them.



Shown headwall uses a 2-piece divider molding. The snap-on molding face allows for panel removal should access to the valve boxes be required. The molding face prevents anything getting between the panels and allow for easier cleaning.

Panel edges, although not seen, will be sealed with edge banding. The top trim is angled down to prevent the accumulation of dust. The HPL surfaces will stand up to the various healthcare cleaning solutions used in sterile environments.



**SYSTEM 412**

1" wide divider molding  
Perfect for a bold, dynamic look

# SYSTEM 412

- 1" wide bold divider molding. Two ¼" wide flanges cover the panel edges with a ½" recessed reveal between them.
- The reveal can be covered with a flush snap-in insert or recessed laminate strips. Black and clear anodized colors are standard.
- Use vertically or horizontally.
- The system is a non-progressively installed system (panels can be individually removed).



**Available in:** High Pressure or Compact Laminate, Metal Laminate, Tack Board, Wood Veneer, Magnetic Marker Board, Decorative Glass, Acoustical



Bold 1" wide molding paired with wood veneer panels.



Bold 1" wide molding paired with varying panel sizes.



**SYSTEM 510EB**

1/4" wide reveal created with rabbeted 3mm edge banding

Perfect for subtle look with sleek details

# SYSTEM 510EB

- ¼" wide reveal created with rabbeted 3mm edge banding.
- Use vertically or horizontally
- Progressively installed system
- Edge banding color matched to panels minimizes the visible joint line, or the use of contrasting colored edge banding emphasizes the panel joints.

**Available in:** High Pressure or Compact Laminate, Metal Laminate

PSI SYSTEMS



Canadian Valley Technical Center, used both vertically and horizontally.



Temple College, used vertically.





#### SYSTEM 631

1/4" reveal with a narrow single rib

Perfect for a sleek, tailored look

# SYSTEM 631

- Tailored 1/4" reveal with a sleek narrow single rib. Black or clear anodized color is standard.
- Progressively installed system
- Use vertically or horizontally
- Panels have .5mm edge banding (black or platinum are standard)

**Available in:** High Pressure or Compact Laminate, Metal Laminate, Custom Graphic Laminate, Wood Veneer, Decorative Glass, Acoustical



HPL surfaces will stand up to the various healthcare cleaning solutions used in hospital environments. Shown in a clinic lobby with a 1/4" wide divider molding paired with HPL panels.



Paired with wood veneer, a 1/4" wide divider molding complements the stepped corner trim.



Variety of different HPL patterns and colors are all brought together in the same system with a 1/4" wide reveal between panels.



HPL panels with a 1/4" wide divider molding. Extensive field dimension work was required to match the various window sizes with the panels to get everything to align. Many different panel sizes were required, resulting in a more expensive, but well worth-it installation.



**SYSTEM 632**

1/2" wide reveal containing a double ribbed fin design

Perfect for a bold look with subtle trim details

# SYSTEM 632

- Bold 1/2" wide reveal containing a double ribbed fin design. Black or clear anodized color is standard.
- Use vertically or horizontally
- Progressively installed system
- Panels have .5mm edge banding (black or platinum is standard).

**Available in:** High Pressure or Compact Laminate, Metal Laminate, Custom Graphic Laminate, Wood Veneer, Decorative Glass, Acoustical

PSI SYSTEMS



HPL and glass panels are joined by a 1/2" wide double ribbed divider molding. Corners are formed with two 604 edge trims to create a more minimal look.





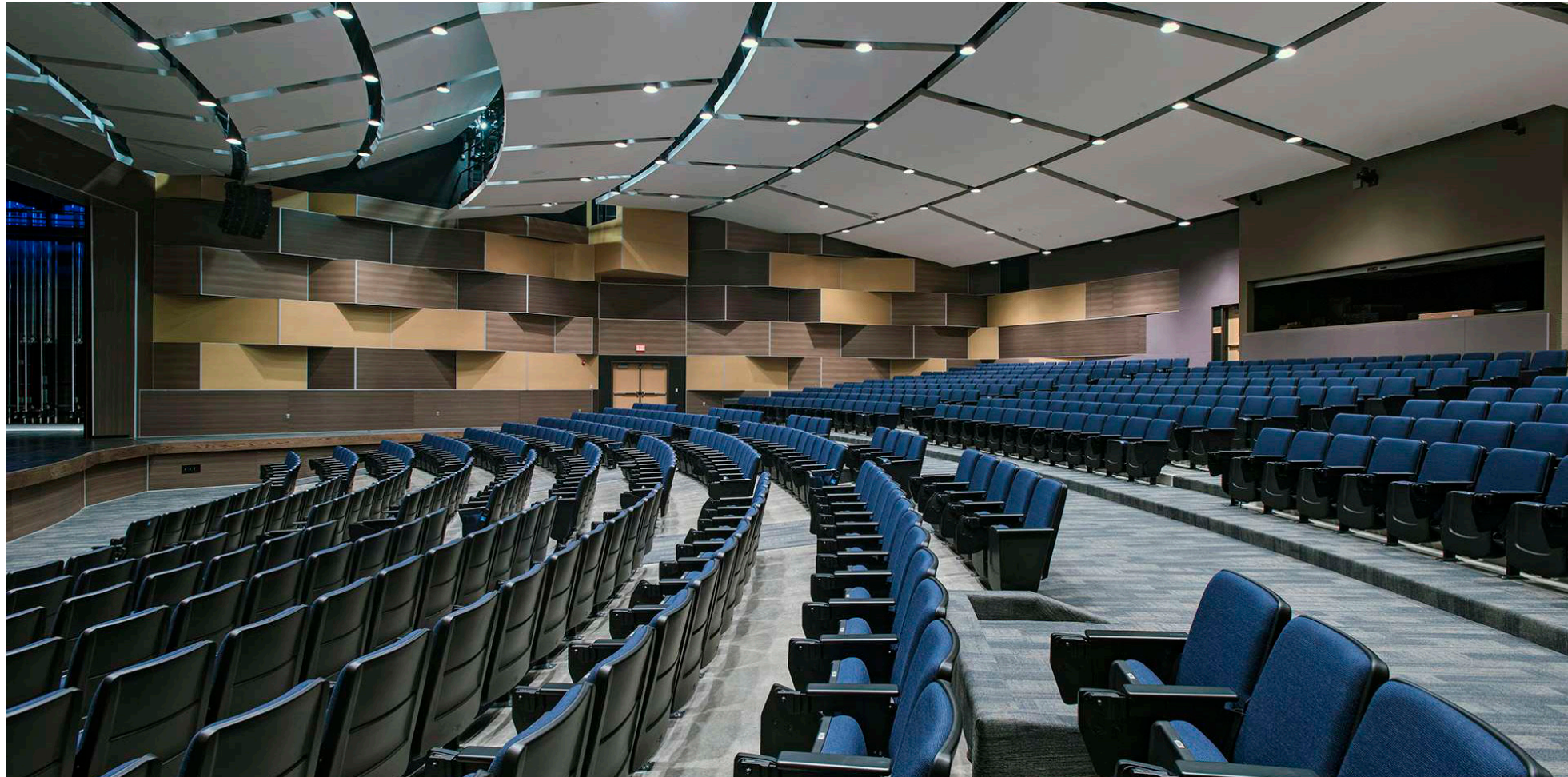
### 103L CORNER

Available in 90 or 135-degrees, with 1" x 1" rounded flanges that overlap the panel edges

# 103L CORNER

- The 103L Corner and 304 Edge Trim sets are designed for maximum abuse resistance and ease of installation.
- The 304 Edge Trim has a ½" wide face that overlaps the panel edge.
- The 103L-90 and 103L-135 are 90 and 135-degree outside corners with 1" x 1" rounded flanges that overlap the panel edges.
- Black and clear anodized are the standard colors.

PSI SYSTEMS





**603L CORNER**

Available in 90 or 135-degrees, presents a stepped appearance with a 3/8" wide face

## 603L CORNER

- The 603 Corner and 604 edge trim sets provides a refined look with minimal coverage of the panel edges.
- The 604 Edge Trim has a  $\frac{3}{8}$ " wide face that overlaps the panel edge.
- The 603-90 and 603-135 are 90 and 135-degree outside corners. This creates a stepped appearance with a  $\frac{3}{8}$ " wide face.
- Black and clear anodized are the standard colors.

PSI SYSTEMS





## WALL PANEL SURFACE GALLERY

All of our wall panel surface materials can be used alone or in any combination to achieve your design goals.

Ask your account representative about the best way to achieve your vision while staying on budget.

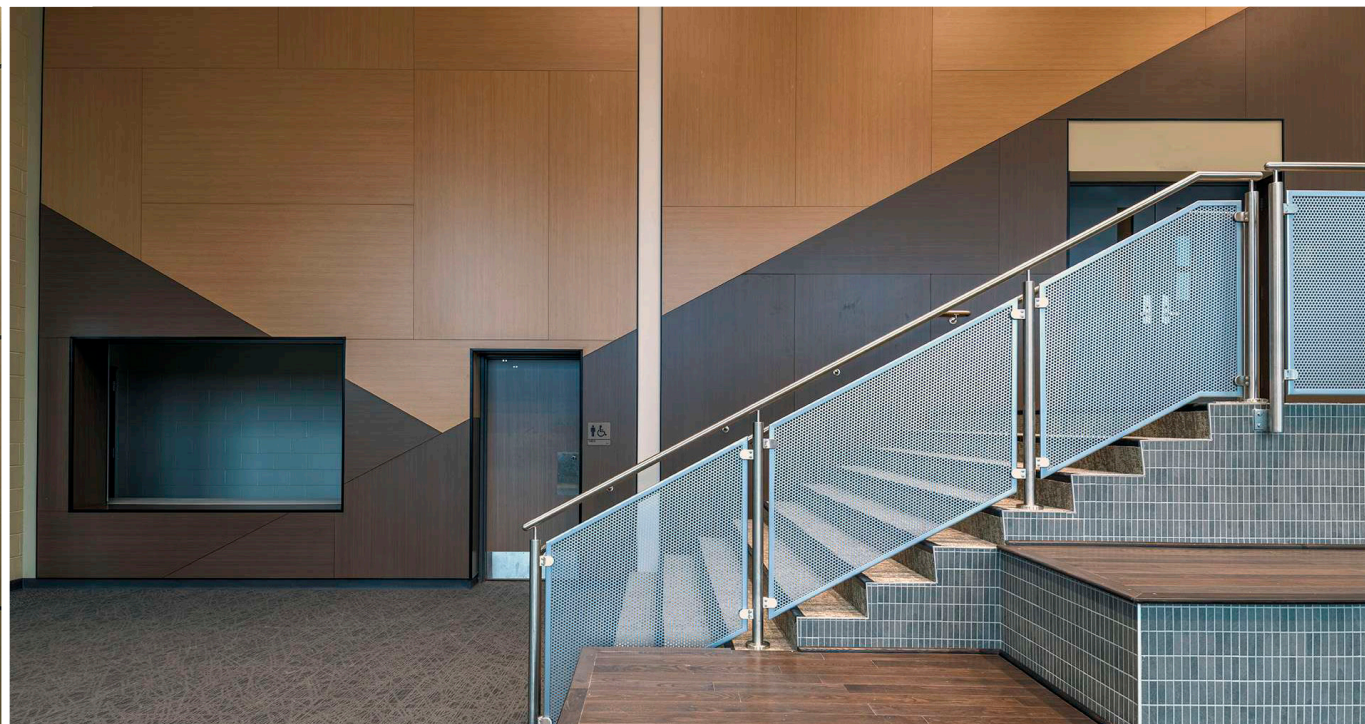
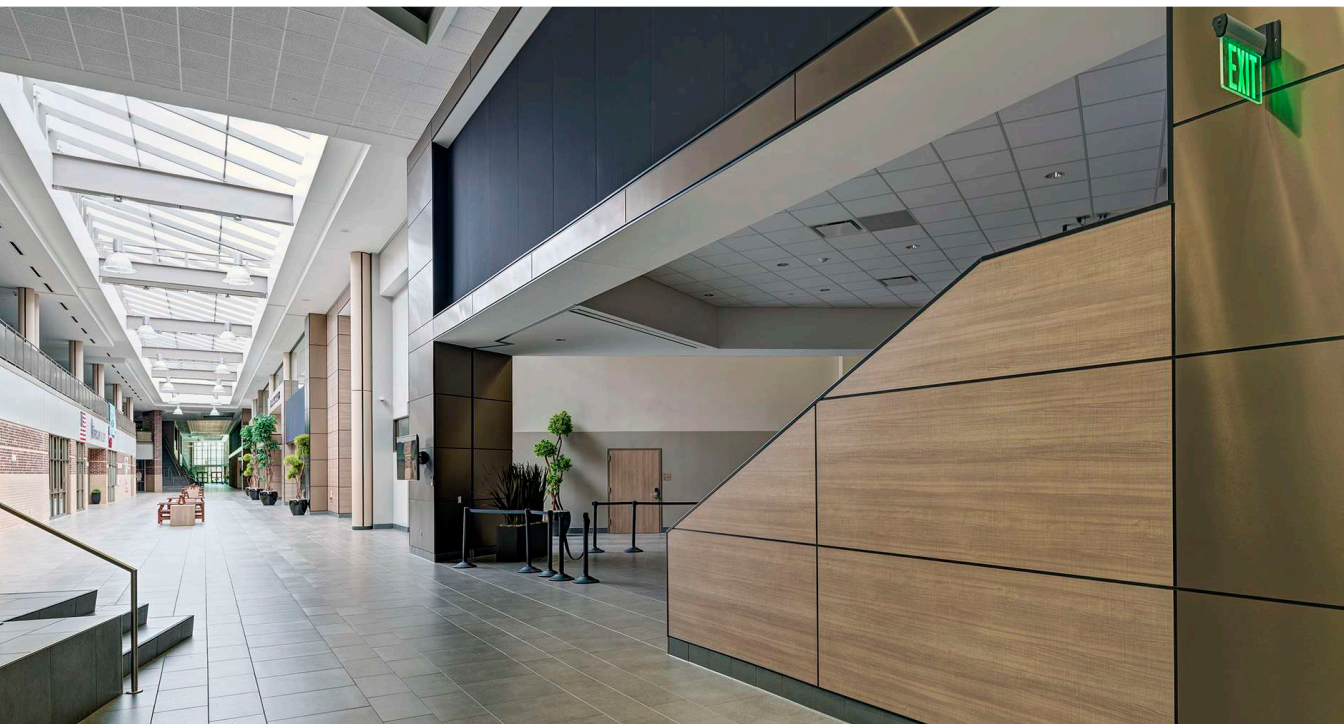
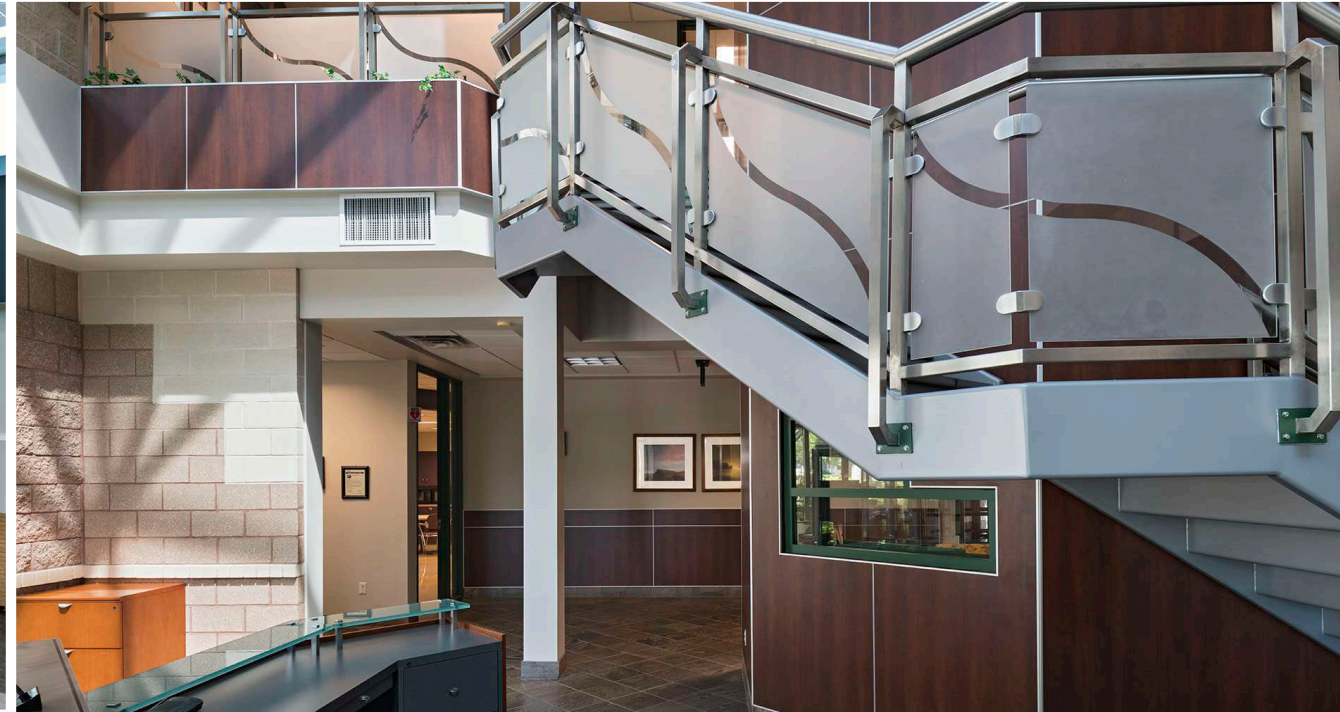
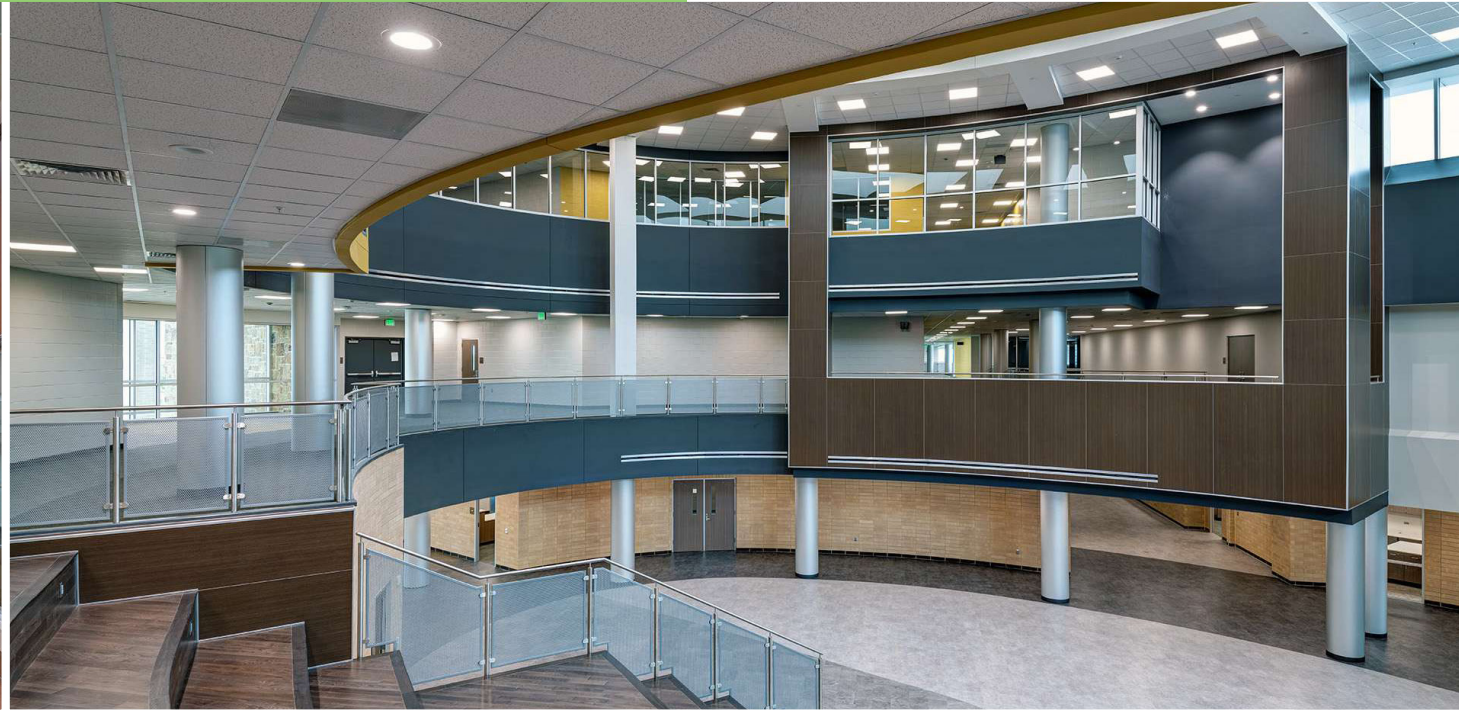
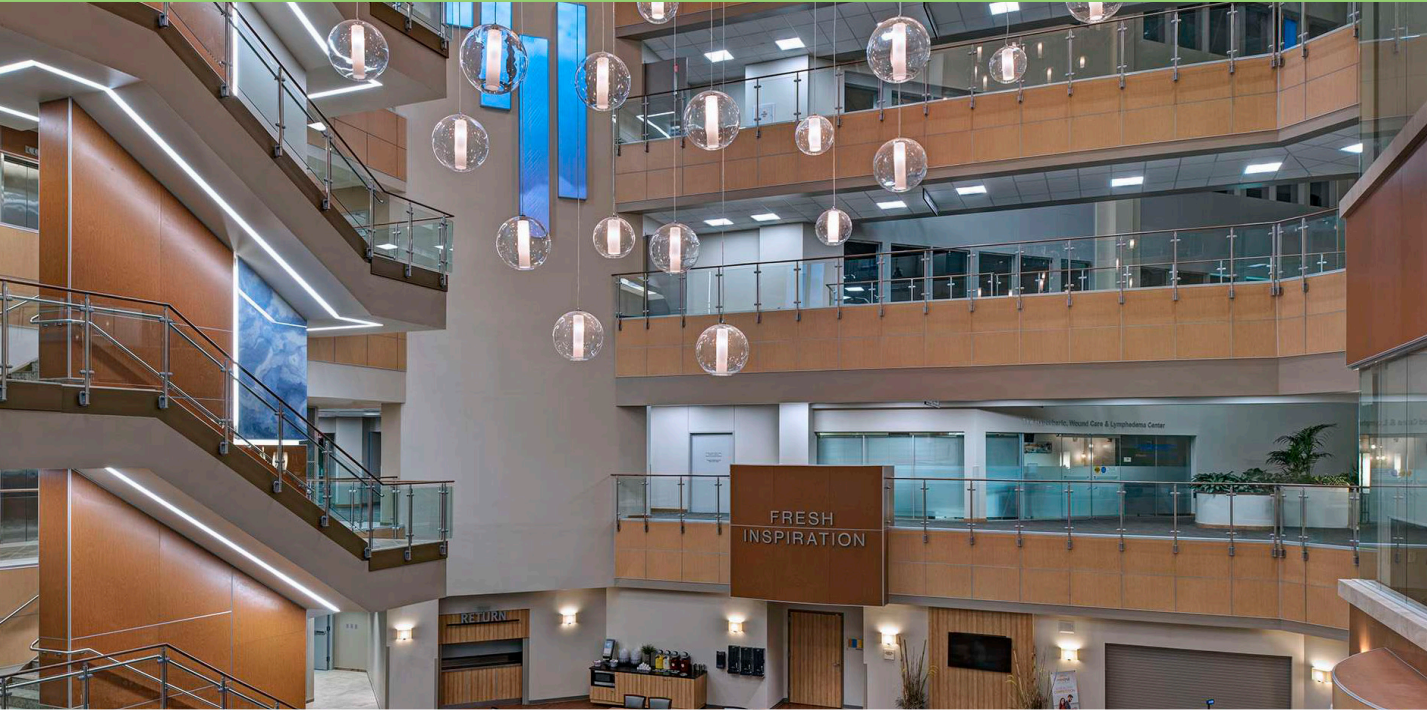
# HIGH PRESSURE (HPL) & COMPACT (PHENOLIC) LAMINATE GALLERY



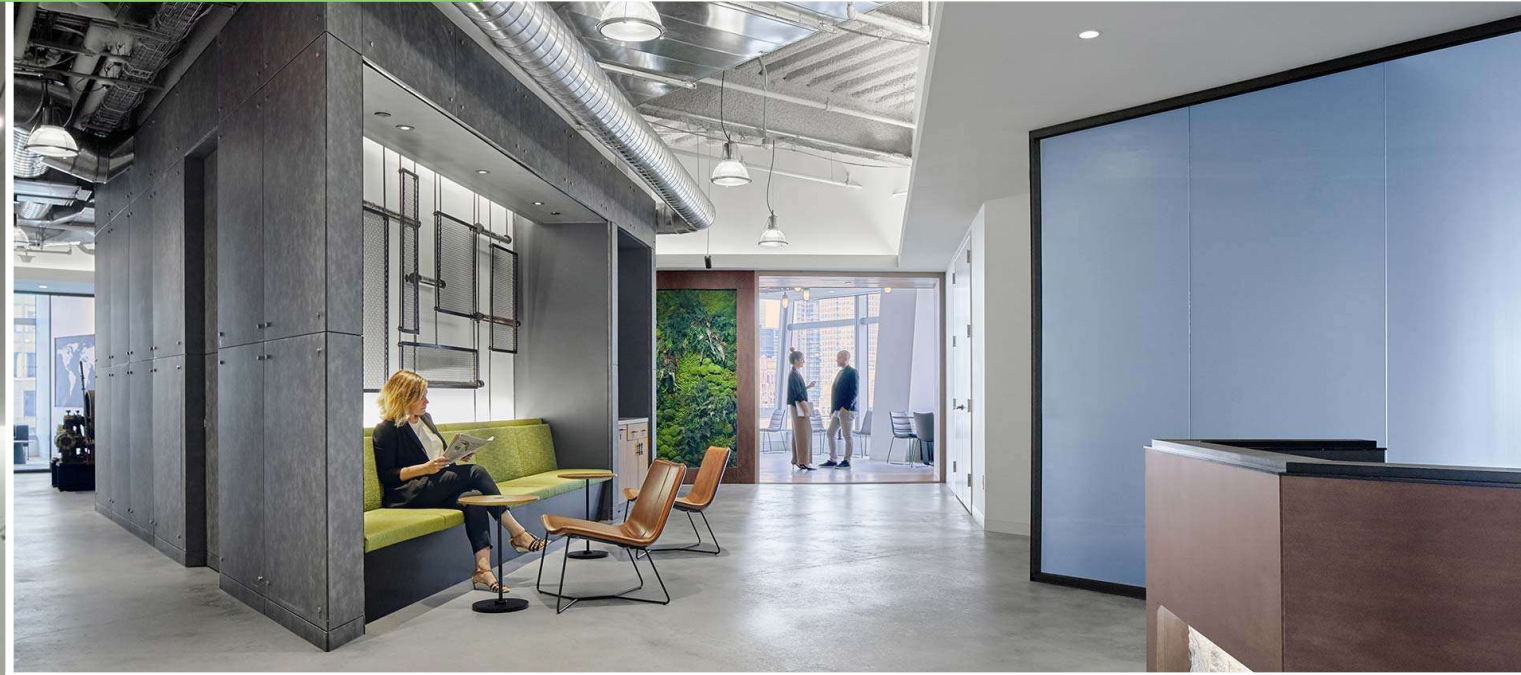
Combine compact laminate below and HPL up high for best durability with no visual difference for best price option



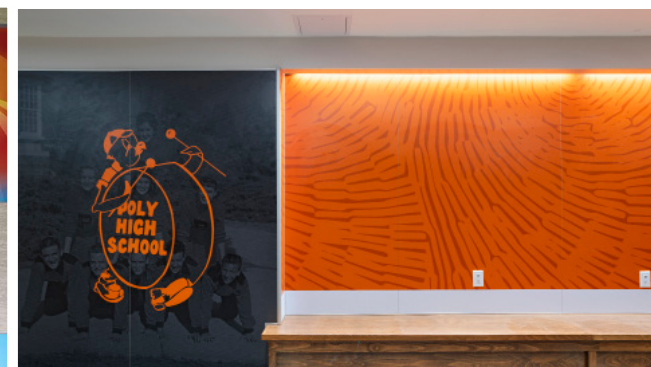
# WOOD VENEER GALLERY



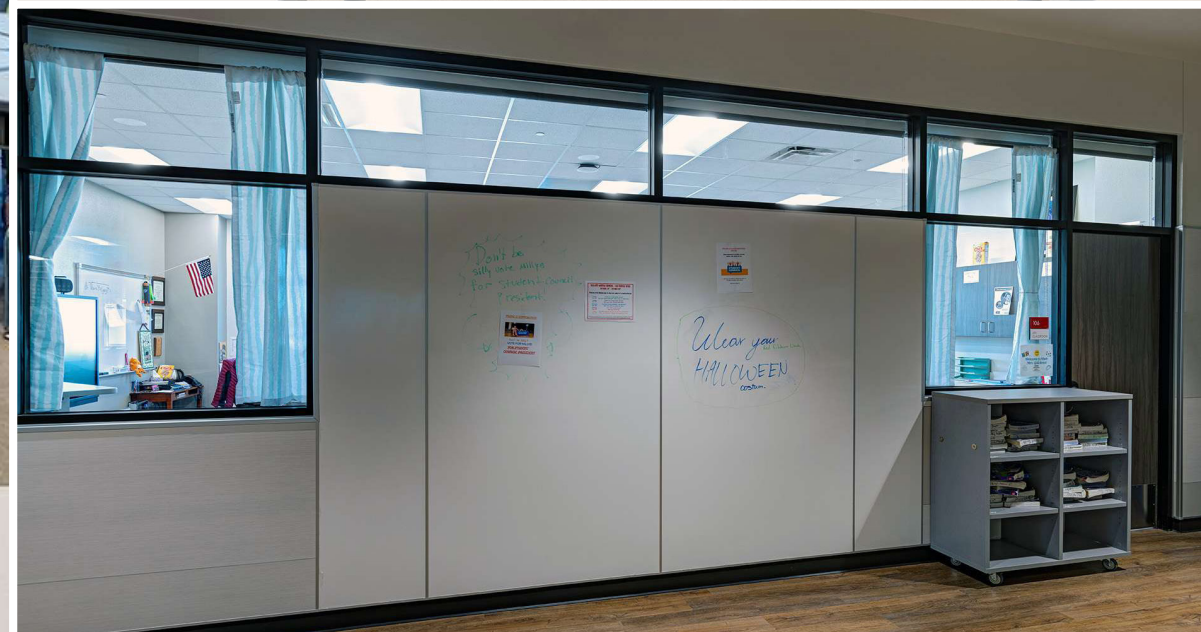
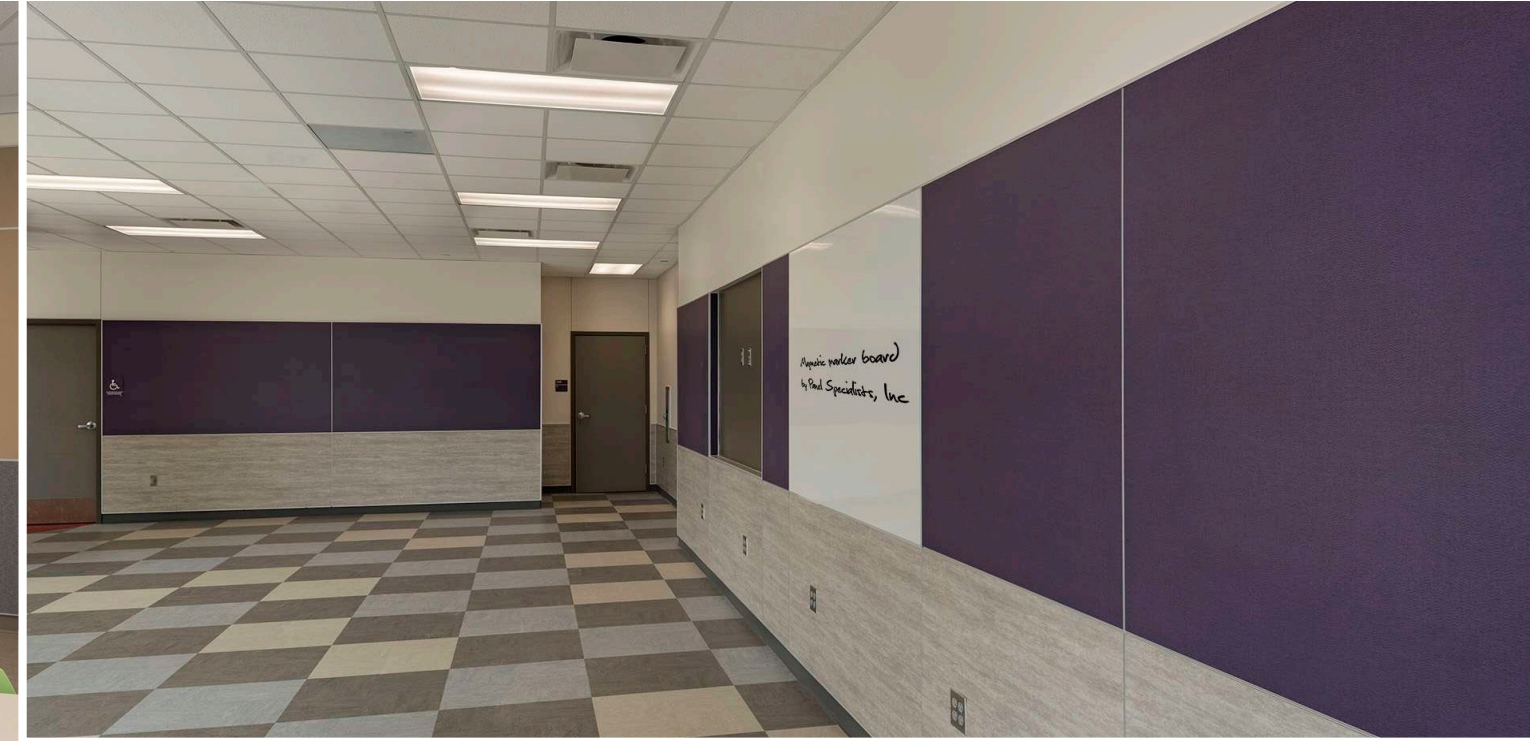
# METAL LAMINATE GALLERY



# CUSTOM GRAPHIC & COMPACT LAMINATE GALLERY



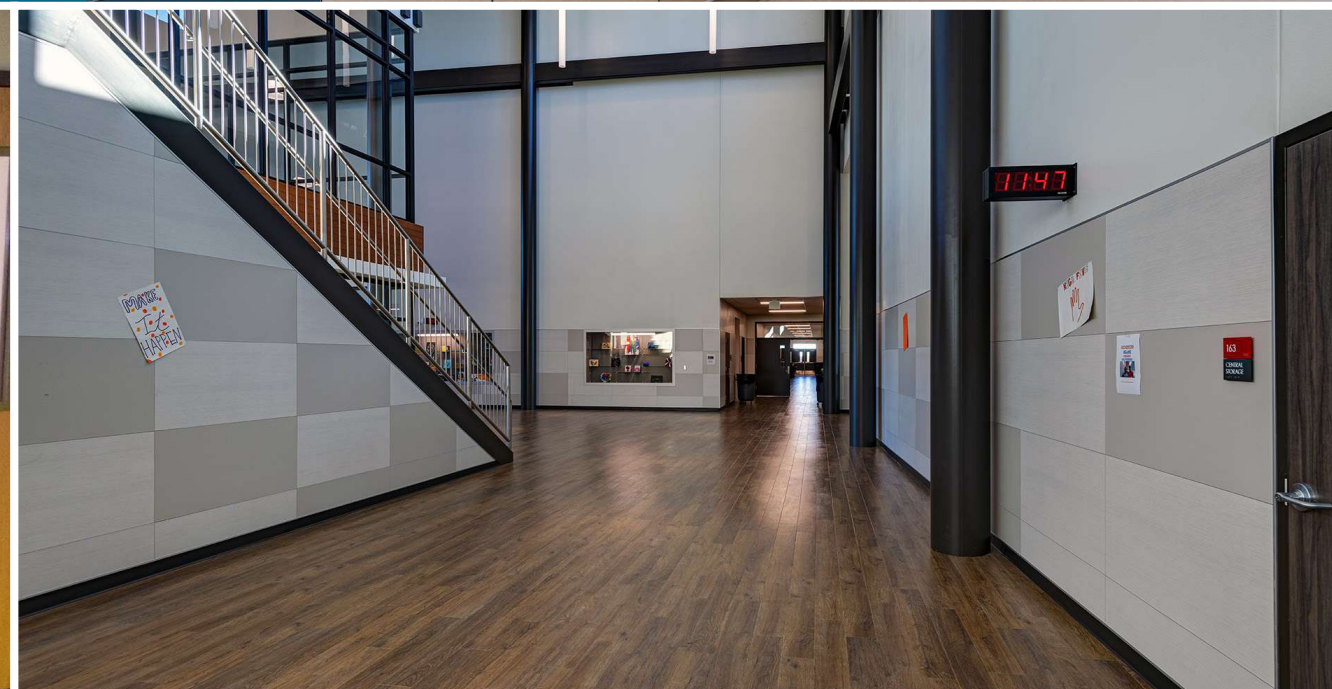
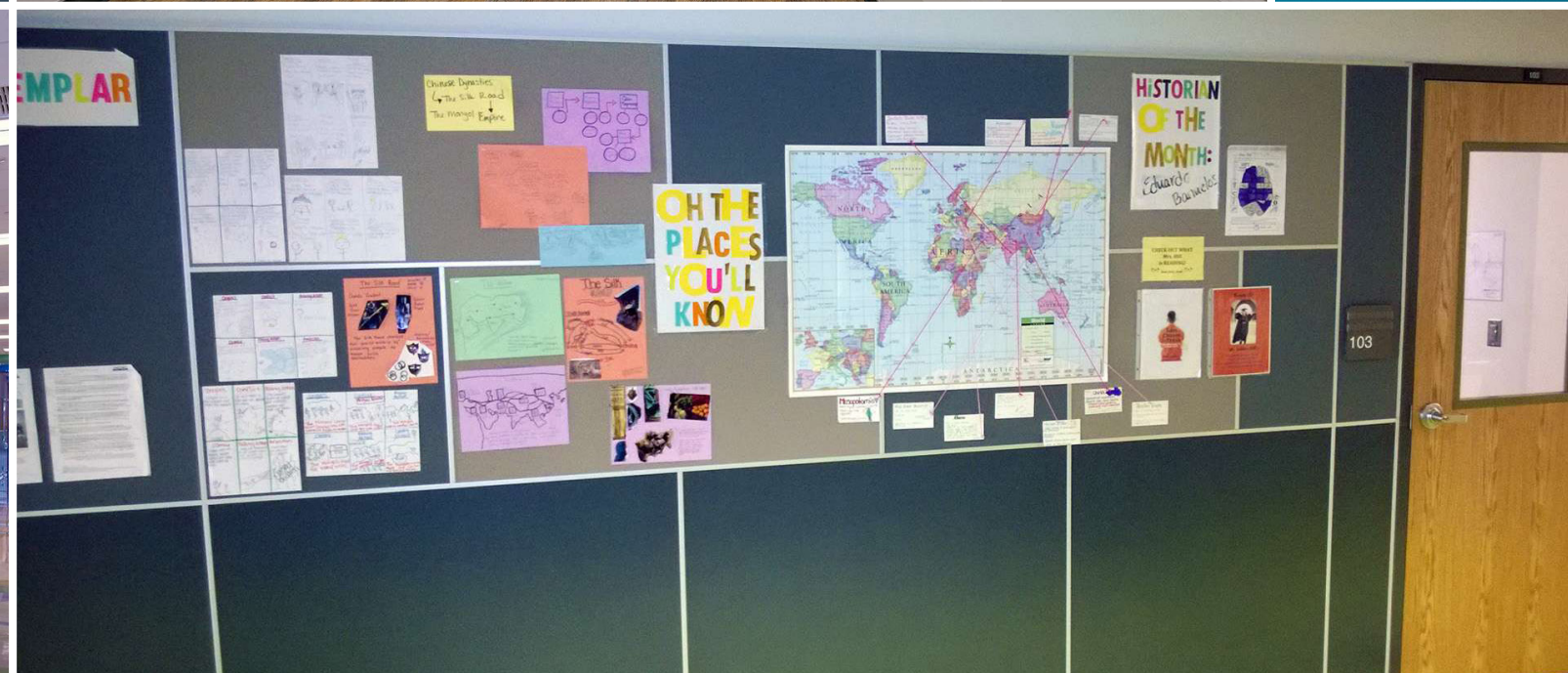
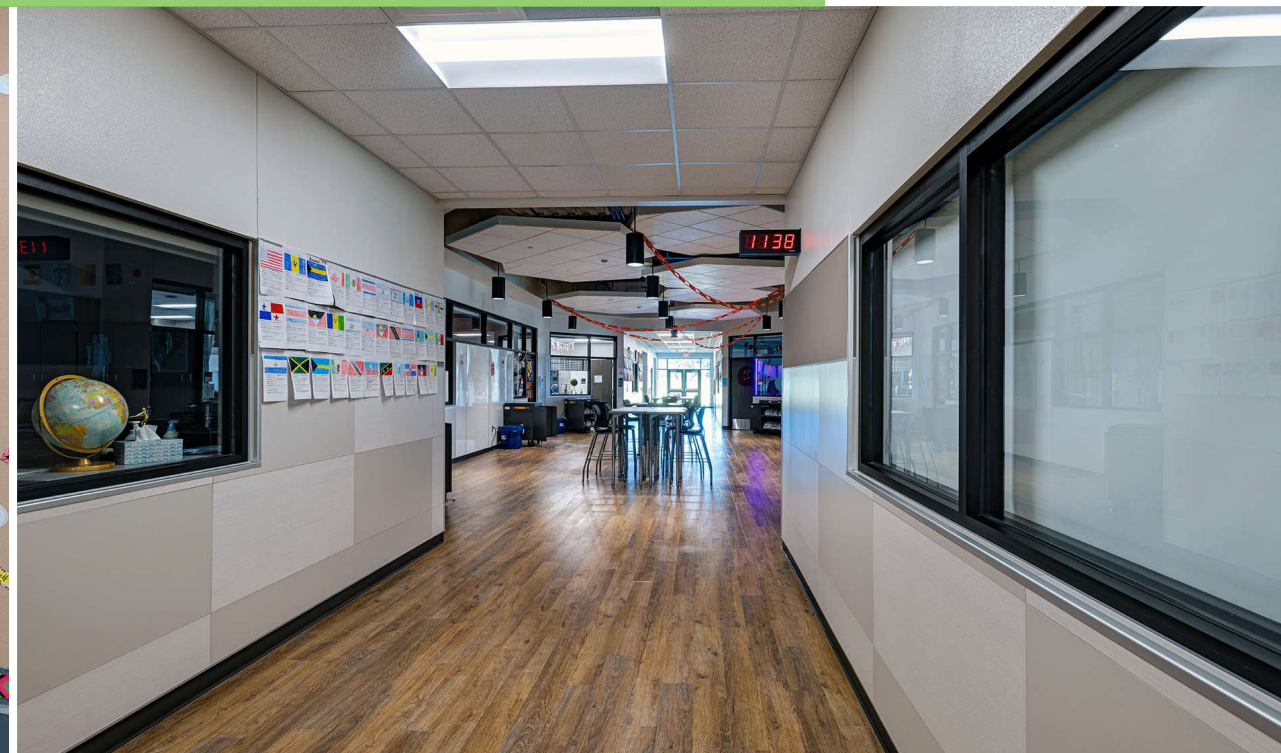
# MAGNETIC DRY-ERASE BOARD GALLERY



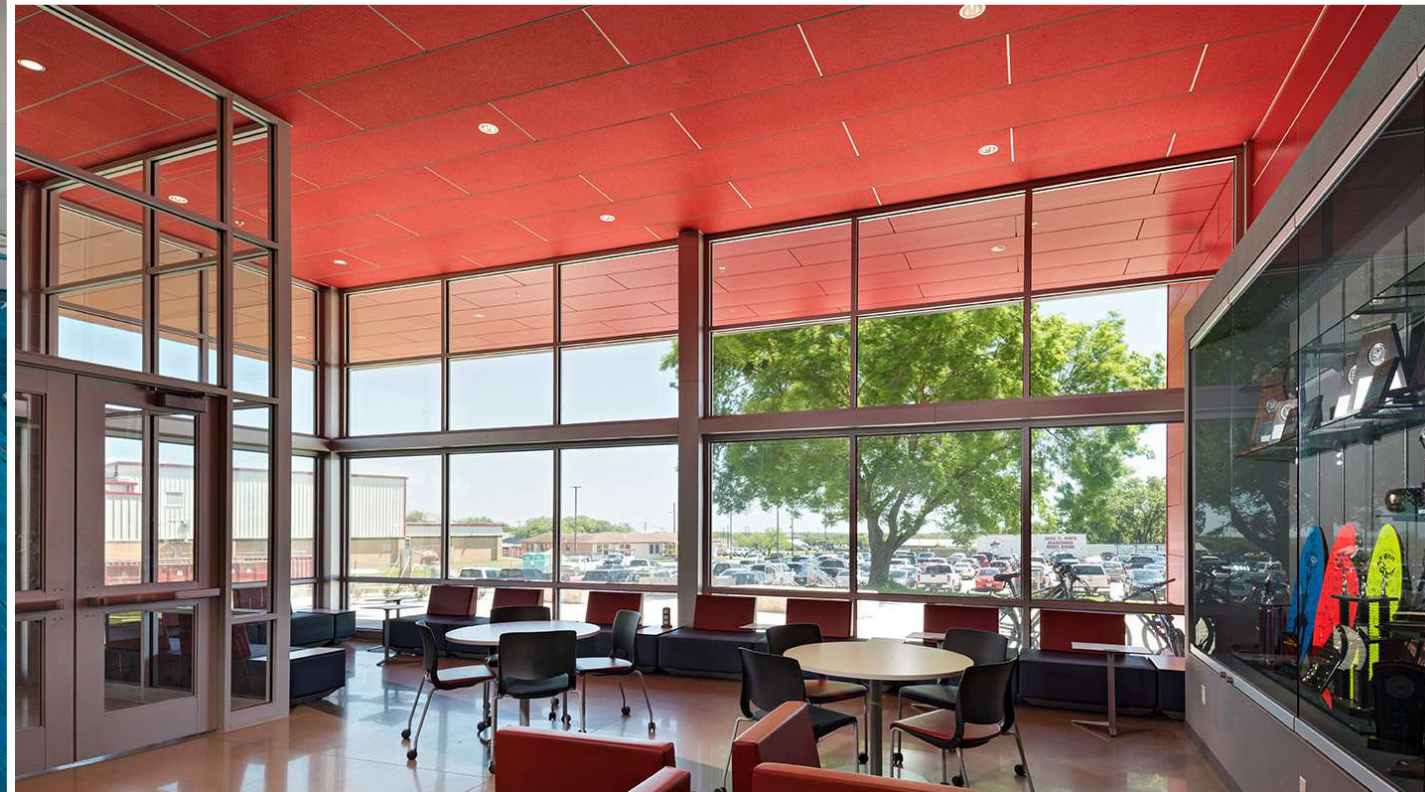
# DECORATIVE GLASS GALLERY



# TACK BOARD GALLERY



# ACOUSTICAL PANELS GALLERY



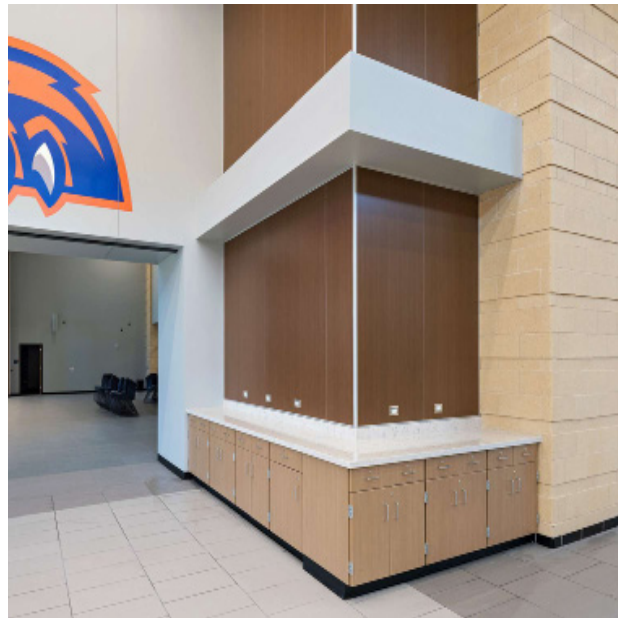
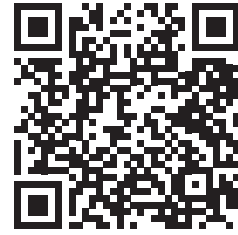


## CUSTOMIZATION

Consult with us on how we can execute your vision for your project!

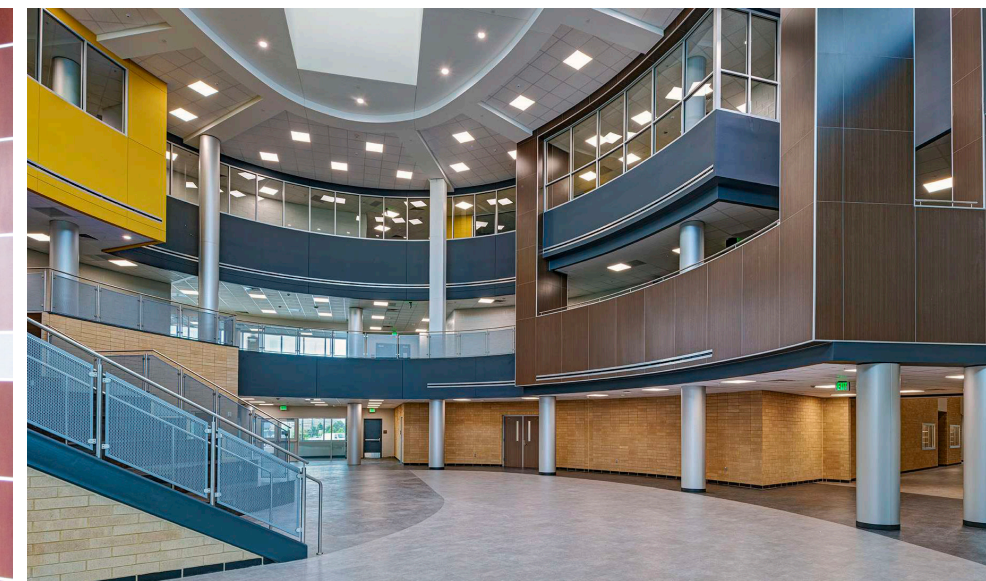
# WOOD VENEER SOLUTIONS

We offer a wide array of cuts and species of sequenced pre-finished wood veneers for your panel system. The same wood veneers can also be applied to a variety of other applications for a coordinated look to complement your panel system project.



# CURVED WALL APPLICATIONS

PSI wall panel system can be applied to curved walls and columns providing for a dynamic visual effect. Systems 310, 314, and 410 can be used in these applications.



## CUSTOM POWDER COATING

Enhance your space with custom color-matched trim and corner moldings for a perfectly coordinated and polished finish. Trim and corner moldings can be color-matched to a custom color or selected from available color charts to create a cohesive design.



Choose from RAL color charts for custom color trims and corners.



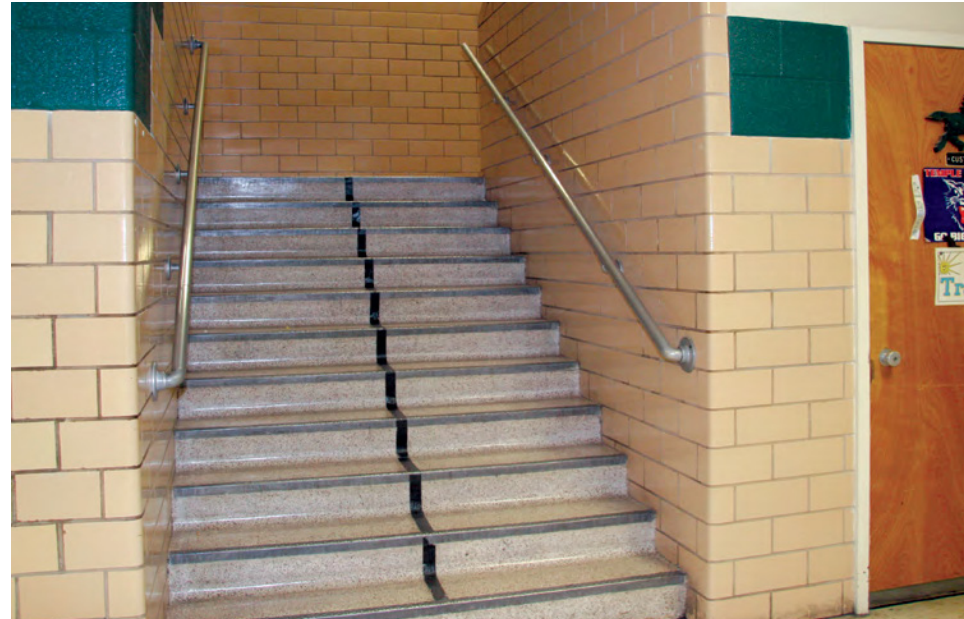
## COMPACT LAMINATE

Compact Laminate is the perfect choice for high traffic areas that require durability, moisture resistance, and impact resistance.



# RENOVATION SOLUTIONS

Save on demolition costs by going over existing walls or even lockers as shown below. We can accommodate budget-oriented to high-end solutions for any environment.



# MIX & MAX SOLUTIONS

Endless combinations to meet your project's needs. Combine HPL, custom graphics, tack board and more to create the perfect mix for your space.





TECHNICAL INSIGHTS

# TECHNICAL INSIGHTS



**EDGE BANDING** finishes panel edges

- 3mm or .5mm PVC
- Black and Platinum standard
- Edging matched to panel faces are custom

**MOLDINGS** are available in different configurations that secure the panels to the wall

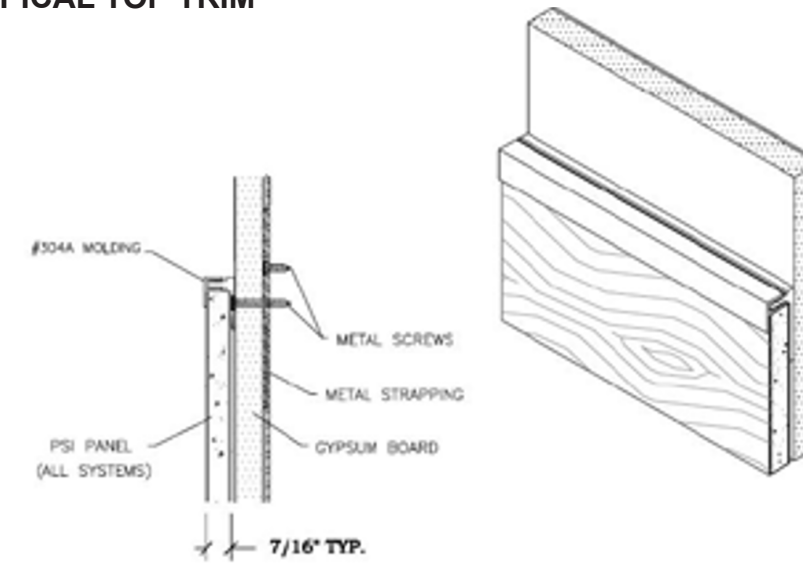
- Black or clear anodized standard with custom painted finishes available
- Reveals created from 1/16" to 1"

**TRIMS**

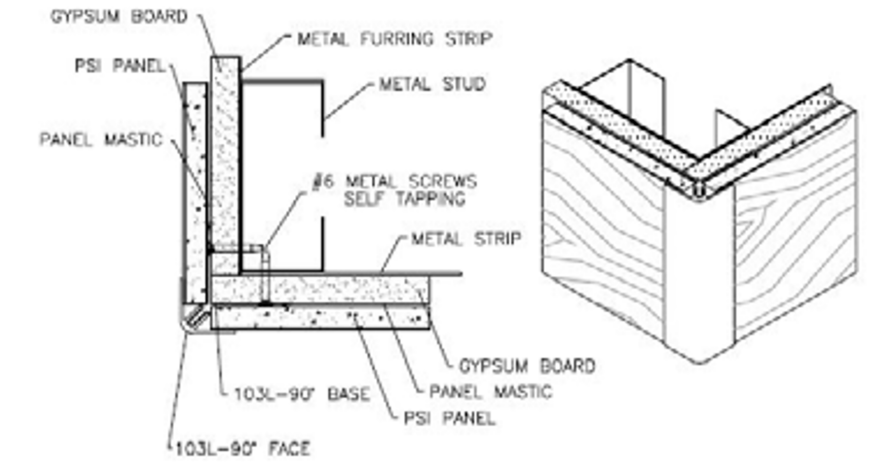
- A variety of aluminum edge trims, corners, and chair rails finish the system at ceilings, base, corner, wainscot, and intersection conditions



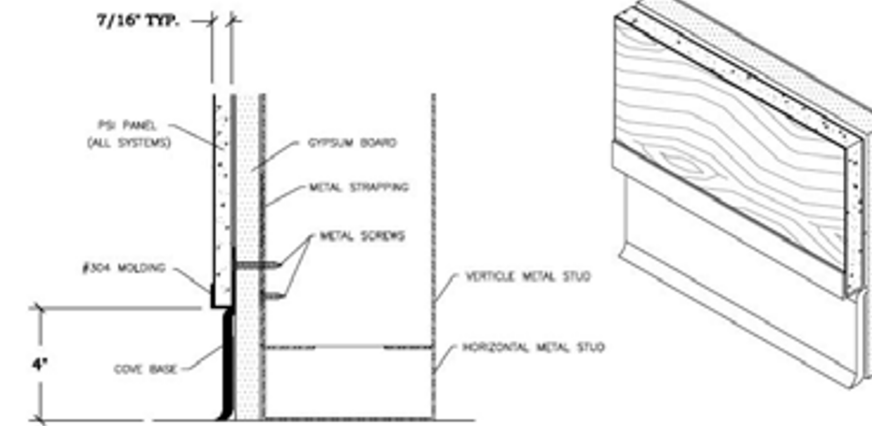
## TYPICAL TOP TRIM



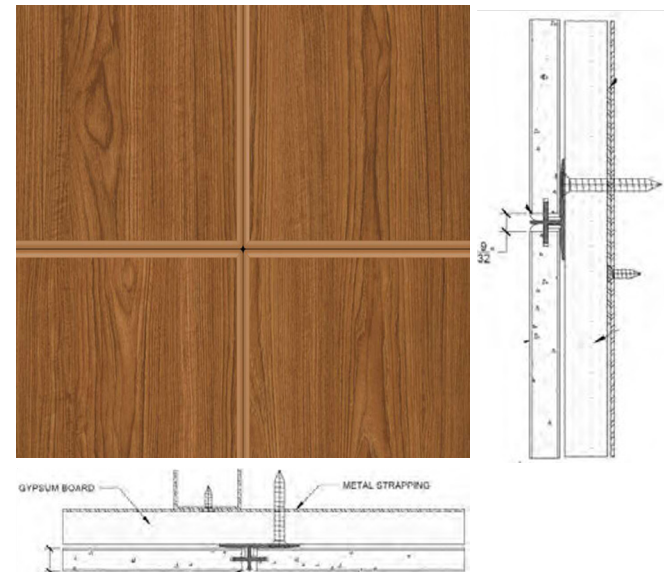
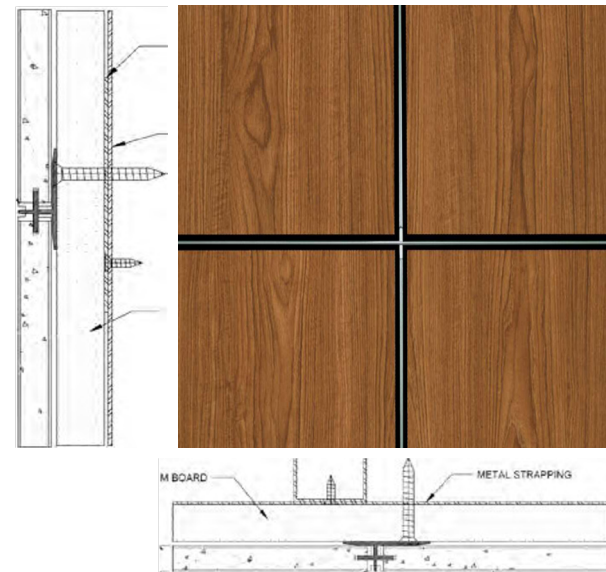
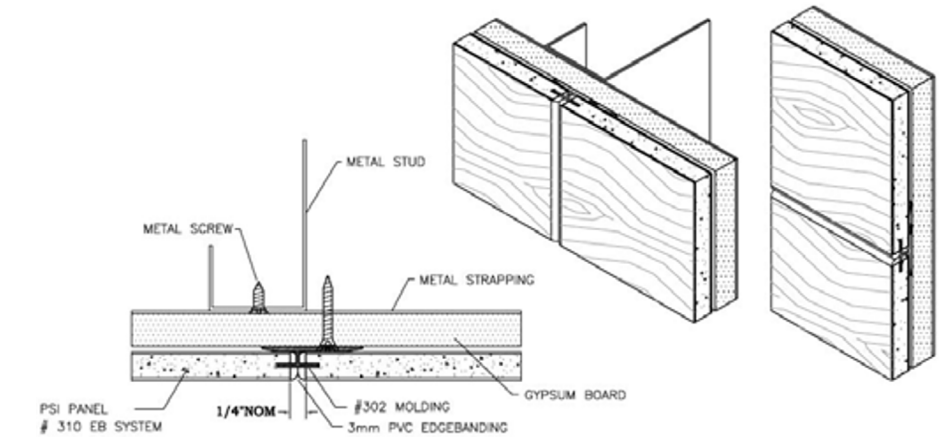
## TYPICAL CORNER JOINT & MOLDING



## TYPICAL BASE TRIM



## TYPICAL VERTICAL MOLDING





INDEX

## INDEX

103L Corner: 90 or 135 degree outside corner with 1"x1" rounded flanges .....	56	System 314: ¼" wide concave radius reveal .....	32
603L Corner: 90 or 135 degree outside corner, stepped appearance with ¾" wide face .....	60	System 410: ½" wide divider molding covers panel edges.....	36
Acoustical Panels Gallery .....	78	System 412: 1" wide divider molding.....	40
Custom Graphic & Compact Laminate Gallery.....	70	System 510EB: ¼" wide reveal with rabbeted banding .....	44
Curved Wall Applications .....	83	System 631: ¼" reveal with narrow single rib.....	48
Custom Powder Coating.....	84	System 632: ½" wide reveal with double ribbed fin design.....	52
Decorative Glass Gallery .....	74	Tack Board Gallery .....	76
High Pressure (HPL) & Compact (Phenolic) Laminate Gallery .....	64	Technical Insights .....	90
Magnetic Dry-Erase Board Gallery .....	72	Wall Panel Surfaces .....	6
Metal Laminate Gallery.....	68	Wood Veneer Gallery.....	66
Mix & Max Solutions .....	87	Wood Veneer Solutions .....	82
Renovation Solutions.....	86		
Compact Laminate.....	85		
System 310: 1/16" wide reveal .....	10		
System 310EB: ¼" wide reveal with rounded edge banding .....	16		
System 310EB   310: ¼" wide horizontal reveal, 1/16" wide vertical reveal .....	20		
System 312: ½" wide recessed reveal.....	24		
System 312   310: ½" wide horizontal recessed reveal, 1/16" wide vertical reveal .....	28		

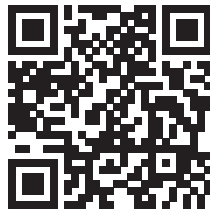
# Built From The Best Materials.

## The Ultimate in Interior Finish Products.

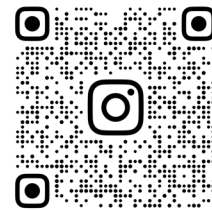
Surface Materials, Inc. is a distributor of interior design products that was established in 1976. Surface Materials is a women-owned business and serves the interior design community as a trusted resource for supplying a wide variety of quality commercial interior finish products including:

- Wall Panel Systems
- Wallcoverings
- Wood Veneers
- Architectural Laminates
- Digital/Scalable Wall Designs
- Acoustical Panel Systems
- Acoustical Products
- Floorings

Surface Materials works with architects, interior designers, contractors, and building owners to help them fully realize their design vision. Surface Materials' team supports each design project with unique interior finish products that bring a design concept to life.



SurfaceMaterials.com



SURFACE\_MATERIALS



**surface**materials

*The ultimate in interior finish products.*

**(440) 248-0000**

6655 parkland boulevard  
solon, ohio 44139  
www.surfacematerials.com